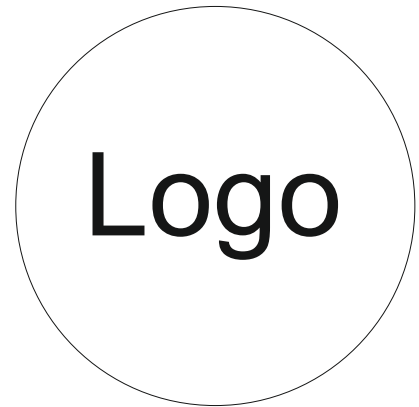


# Max Mustermann

Geigenbaumeister  
Straße, PLZ - Ort



Mrs.  
XX XXX  
Straße  
PLZ - Ort

## Declaration of materials



Herewith I declare that the violin, currently in the possession of Mrs. XX XXX, bearing the label inside, „MEISTER, ORT, JAHR“, contains at the time of the statement the following materials:

Front:	spruce [ <i>picea abies</i> ]
Back, ribs and neck:	maple [ <i>acer pseudo platanus</i> ]
Peg-inlays:	white MOP [ <i>pinctada maxima, south pacific</i> ]
Fingerboard:	ebony [ <i>diospyros spp.</i> ]**
Pegs:	ebony [ <i>diospyros spp.</i> ]**
Tailpiece :	ebony [ <i>diospyros crassiflora or ebenum</i> ]*
Nut:	ebony [ <i>diospyros crassiflora or ebenum</i> ]*
Inner linings:	spruce [ <i>picea abies</i> ]
Inner blocks:	spruce [ <i>picea abies</i> ]
Bridge:	maple [ <i>acer pseudo platanus</i> ]
End-button:	ebony [ <i>diospyros crassiflora or ebenum</i> ]*
Chinrest:	ebony [ <i>diospyros crassiflora or ebenum</i> ]*

**This item does not contain any parts made out of species restricted by CITES at this time.**

\* both species are used by the parts' manufacturer, it is not possible to identify which species was used for these parts of the instrument.

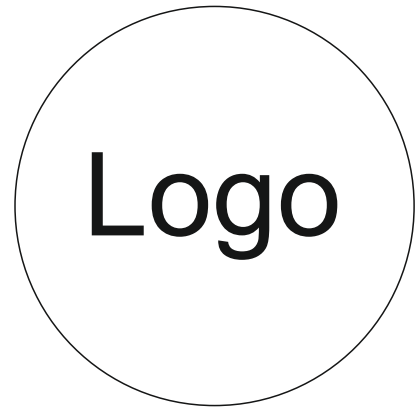
\*\* the species is not identifiable due to the age of the parts.

Datum *Unterschrift*



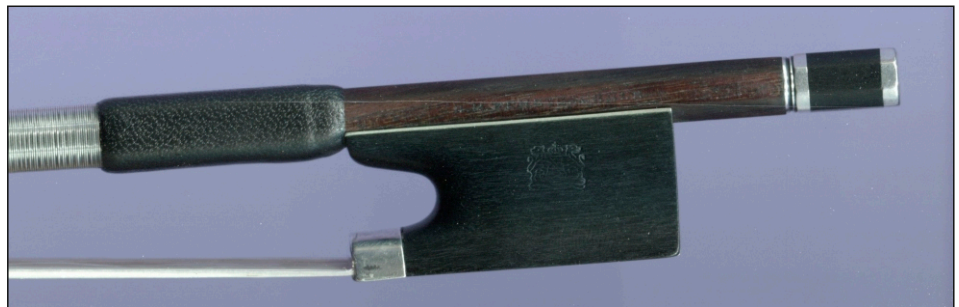
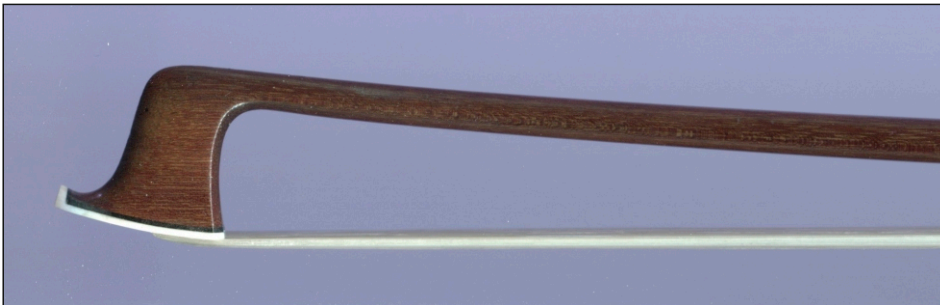
# Max Mustermann

Bogenmachermeister  
Straße, PLZ - Ort



Mrs.  
XX XXX  
Straße  
PLZ - Ort

## Declaration of materials



Herewith I declare that the violin bow, currently in the possession of Mrs. XX XXX, with the brand "MEISTER", contains at the time of the statement the following materials:

Stick:	Pernambuco [ <i>caesalpina echinata</i> , Brazil]**
Frog and button:	Ebony [ <i>diospyros spp.</i> ] ***
Faceplate/tip:	Brazilian nelore cattle bone [ <i>bos indicus</i> , Brazil]
Lapping:	Goat leather [ <i>capra hircus hircus</i> , Europe]
Slide and eyes:	Mother of pearl awabi [ <i>haliotis gigantea</i> , Japan]
Mountings:	Silver

\* The species is not identifiable due to the age of the described parts.

\*\*appendix II CITES, bows excepted due to annotation #10

\*\*\*appendix II CITES, bows excepted due to annotation #5

**This bow does not contain any parts made out of species restricted by CITES at this time.**

Datum

*Unterschrift*

STEMPEL